

\$224,900 - 122 10508 119 Street, Edmonton

MLS® #E4430127

\$224,900

2 Bedroom, 2.00 Bathroom, 1,054 sqft

Condo / Townhouse on 0.00 Acres

Queen Mary Park, Edmonton, AB

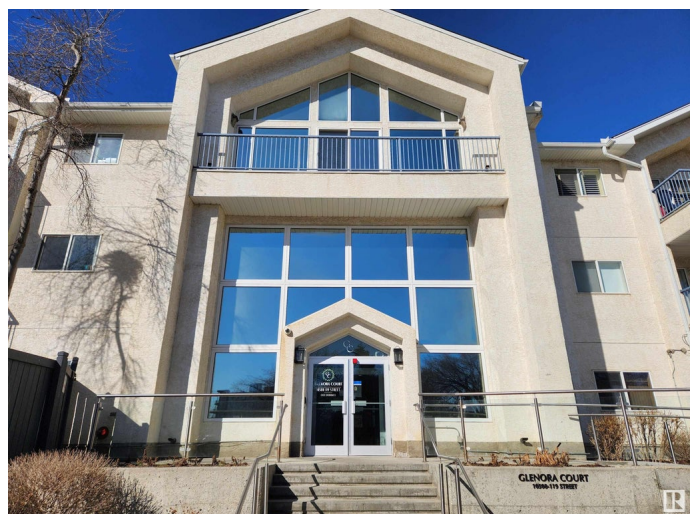
Discover Glenora Court—“an adult-only (18+) complex offering comfort, convenience, and exceptional amenities. This bright 1072 sq.ft 2-bed, 2-bath condo features an open-concept layout with plenty of natural light streaming through the living room windows. Stylish hard surface flooring flows throughout the unit, complementing a modern kitchen equipped with S/S appliances, breakfast bar, and dining space. The spacious primary features a large walk-through closet leading to a private 4-pc ensuite. The large 2nd bedroom is also conveniently located next to a 3-pc bath. Additional features include 2 titled underground parking stalls, storage cage, in-suite laundry, and a spacious east-facing patio overlooking a secure green space, complete with a gas BBQ hookup—“ideal for morning coffee. This well-managed complex offers top-tier amenities such as a fitness centre, social room and car wash bay. Just minutes away from Oliver Square, Brewery District, Grant MacEwan, and the trendy shops and dining of 124 Street.

Built in 1994

Essential Information

MLS® # E4430127

Price \$224,900



Bedrooms	2
Bathrooms	2.00
Full Baths	2
Square Footage	1,054
Acres	0.00
Year Built	1994
Type	Condo / Townhouse
Sub-Type	Lowrise Apartment
Style	Single Level Apartment
Status	Active

Community Information

Address	122 10508 119 Street
Area	Edmonton
Subdivision	Queen Mary Park
City	Edmonton
County	ALBERTA
Province	AB
Postal Code	T5H 4M1

Amenities

Amenities	Car Wash, Exercise Room, Patio, Recreation Room/Centre, Security Door, Storage-In-Suite, Storage Cage
Parking	Underground, See Remarks

Interior

Interior Features	ensuite bathroom
Appliances	Dishwasher-Built-In, Dryer, Hood Fan, Refrigerator, Stove-Electric, Washer, Window Coverings
Heating	Baseboard, Hot Water, Natural Gas
# of Stories	3
Stories	1
Has Basement	Yes
Basement	None, No Basement

Exterior

Exterior	Wood, Stucco
Exterior Features	Golf Nearby, Public Transportation, Schools, Shopping Nearby
Roof	Asphalt Shingles

Construction	Wood, Stucco
Foundation	Concrete Perimeter

Additional Information

Date Listed	April 10th, 2025
Days on Market	12
Zoning	Zone 08
Condo Fee	\$638

DATA IS DEEMED RELIABLE BUT IS NOT GUARANTEED ACCURATE BY THE REALTORS® ASSOCIATION OF EDMONTON. COPYRIGHT 2025 BY THE REALTORS® ASSOCIATION OF EDMONTON. ALL RIGHTS RESERVED.Trademarks are owned or controlled by the Canadian Real Estate Association (CREA) and identify real estate professionals who are members of CREA (REALTOR®, REALTORS®) and/or the quality of services they provide (MLS®, Multiple Listing Service®)

Listing information last updated on April 22nd, 2025 at 10:47am MDT