

\$625,000 - 19219 24 Avenue, Edmonton

MLS® #E4427665

\$625,000

4 Bedroom, 3.50 Bathroom, 1,856 sqft

Single Family on 0.00 Acres

The Uplands, Edmonton, AB

Move-in ready home complete with a fully finished basement & numerous upgrades! Thoughtfully custom-designed with a modern aesthetic, meticulously maintained & offers 4 bedrooms and 4 bathrooms. Open concept main level features a tiled chevron electric fireplace, a stylish kitchen with upgraded backsplash, hood fan, oversized refrigerator, built-in appliances, gas stove & walk-through pantry to mudroom - all complemented by vinyl plank flooring. Upstairs, you'll find a spacious yet cozy bonus room, laundry area & a luxurious primary suite complete with floor-to-ceiling windows, walk-in closet with a window, double sinks & a beautifully upgraded herringbone tiled shower. Two additional bedrooms & a modern main bath complete this level. The finished basement offers extra living space with a guest bedroom with walk-in closet, full bath, family rec room, linen closet & storage. Located minutes from all amenities, walking trails, playgrounds, scenic ravines & easy access to the main highways.

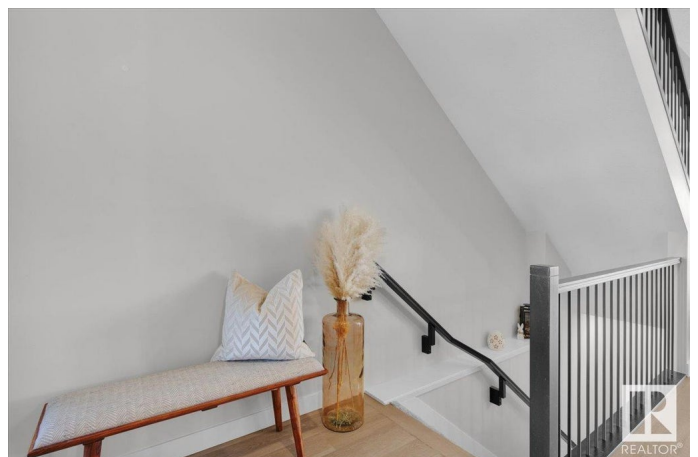
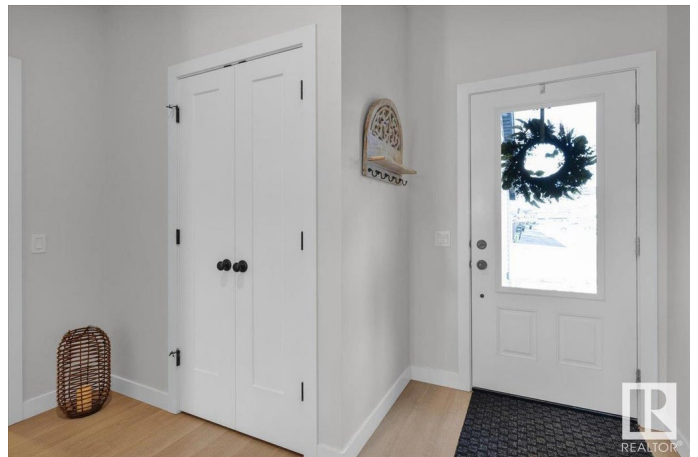
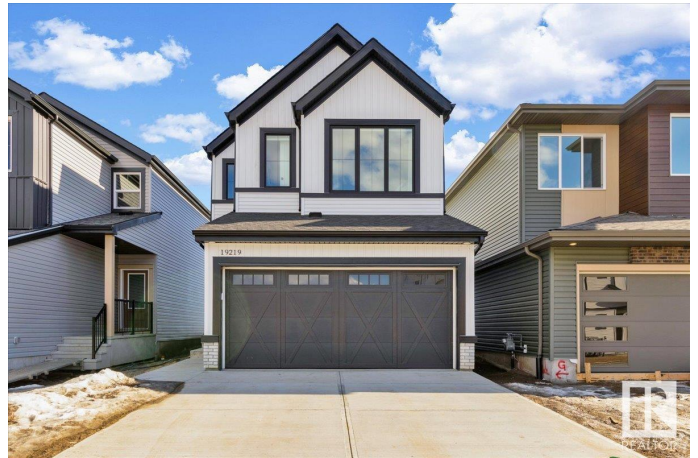
Built in 2022

Essential Information

MLS® # E4427665

Price \$625,000

Bedrooms 4



Bathrooms	3.50
Full Baths	3
Half Baths	1
Square Footage	1,856
Acres	0.00
Year Built	2022
Type	Single Family
Sub-Type	Detached Single Family
Style	2 Storey
Status	Active

Community Information

Address	19219 24 Avenue
Area	Edmonton
Subdivision	The Uplands
City	Edmonton
County	ALBERTA
Province	AB
Postal Code	T6M 1P6

Amenities

Amenities	Ceiling 9 ft., No Smoking Home, HRV System
Parking	Double Garage Attached

Interior

Interior Features	ensuite bathroom
Appliances	Dishwasher-Built-In, Dryer, Refrigerator, Stove-Gas, Washer, Window Coverings
Heating	Forced Air-1, Natural Gas
Stories	3
Has Basement	Yes
Basement	Full, Finished

Exterior

Exterior	Wood, Brick, Vinyl
Exterior Features	Landscaped, Playground Nearby, Public Transportation, Schools, Shopping Nearby, Ski Hill Nearby, Partially Fenced
Roof	Asphalt Shingles
Construction	Wood, Brick, Vinyl

Foundation Concrete Perimeter

Additional Information

Date Listed March 27th, 2025

Days on Market 26

Zoning Zone 57

DATA IS DEEMED RELIABLE BUT IS NOT GUARANTEED ACCURATE BY THE REALTORS® ASSOCIATION OF EDMONTON. COPYRIGHT 2025 BY THE REALTORS® ASSOCIATION OF EDMONTON. ALL RIGHTS RESERVED.Trademarks are owned or controlled by the Canadian Real Estate Association (CREA) and identify real estate professionals who are members of CREA (REALTOR®, REALTORS®) and/or the quality of services they provide (MLS®, Multiple Listing Service®)

Listing information last updated on April 22nd, 2025 at 4:17pm MDT