

\$639,900 - 356 Calderon Crescent, Edmonton

MLS® #E4423467

\$639,900

4 Bedroom, 3.50 Bathroom, 2,442 sqft

Single Family on 0.00 Acres

Cumberland, Edmonton, AB

Welcome to this stunning 2 storey home in Signature Pointe! The main floor is filled with natural light and boasts soaring vaulted ceilings and beautiful architectural arches. The layout includes a separate formal dining room, a cozy gas fireplace, and a spacious kitchen featuring a large island, walk-in pantry and new stainless steel appliances (2023) plus main floor laundry! The grand staircase leads you to the second floor, where you'll find a Massive bonus room, 4 piece bathroom, 3 generously sized bedrooms including large primary bedroom with full 4 piece ensuite, The fully finished lower level adds living space with a large recreation room, Movie Theatre all set up for you, a 4th bedroom, and a 3 piece bathroom. Additional features include a brand-new hot water tank, and 50-year rubber shingles installed in 2023. Double attached heated garage and Central A/C! This home is close to the lake & walking trails! Very easy access to St. Albert, Anthony Henday, Edmonton Garrison and so much more!

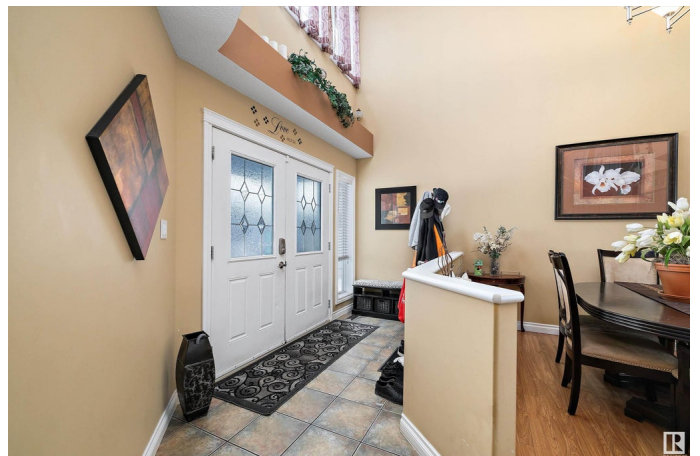
Built in 2003

Essential Information

MLS® # E4423467

Price \$639,900

Bedrooms 4



Bathrooms	3.50
Full Baths	3
Half Baths	1
Square Footage	2,442
Acres	0.00
Year Built	2003
Type	Single Family
Sub-Type	Detached Single Family
Style	2 Storey
Status	Active

Community Information

Address	356 Calderon Crescent
Area	Edmonton
Subdivision	Cumberland
City	Edmonton
County	ALBERTA
Province	AB
Postal Code	T6V 1R8

Amenities

Amenities	See Remarks
Parking	Double Garage Attached

Interior

Interior Features	ensuite bathroom
Appliances	Dishwasher-Built-In, Dryer, Garage Control, Garage Opener, Refrigerator, Stove-Electric, Washer, Window Coverings
Heating	Forced Air-1, Natural Gas
Fireplace	Yes
Fireplaces	Tile Surround
Stories	3
Has Basement	Yes
Basement	Full, Finished

Exterior

Exterior	Wood, Vinyl
Exterior Features	Fenced, Playground Nearby, Public Transportation, Schools, Shopping Nearby

Roof	Asphalt Shingles
Construction	Wood, Vinyl
Foundation	Concrete Perimeter

Additional Information

Date Listed	February 28th, 2025
Days on Market	53
Zoning	Zone 27

DATA IS DEEMED RELIABLE BUT IS NOT GUARANTEED ACCURATE BY THE REALTORS® ASSOCIATION OF EDMONTON. COPYRIGHT 2025 BY THE REALTORS® ASSOCIATION OF EDMONTON. ALL RIGHTS RESERVED. Trademarks are owned or controlled by the Canadian Real Estate Association (CREA) and identify real estate professionals who are members of CREA (REALTOR®, REALTORS®) and/or the quality of services they provide (MLS®, Multiple Listing Service®)

Listing information last updated on April 22nd, 2025 at 1:32pm MDT