

\$519,900 - 8911 Elves Loop, Edmonton

MLS® #E4422111

\$519,900

3 Bedroom, 2.50 Bathroom, 1,462 sqft
Single Family on 0.00 Acres

Edgemont (Edmonton), Edmonton, AB

Welcome to the Emerson model built by Excel Homes 35 year builder in sought after EDGEMONT! On a quiet street, this beautiful UPGRADED half duplex with FRONT DOUBLE ATTACHED GARAGE awaits. Upon entering you are greeted with 9 FOOT MAIN FLOOR CEILING, LVP flooring, THICK 1.25" QUARTZ THROUGHOUT including kitchen countertops , stove-electric, refrigerator, dishwasher built-in & over the range microwave. The kitchen which has PENDANT LIGHTS, upgraded nook light fixture & opens to the living room. 1/2 bath completes the main floor. Upstairs is premium carpet, 3 bedrooms, including large primary with walk in closet, and 4 piece ensuite. Laundry and full main bath complete the upper level. SEPARATE ENTRANCE, BASEMENT CEILING HEIGHT 9 FT, ROUGH-IN READY for LEGAL SUITE. GREEN BUILT certified, includes tankless water system,HRV, insulated lines, upgraded insulation, eco bee thermostat, low E windows, solar panel rough-in and much more! REAR DECK & PREMIUM SIDING INCLUDED!
Close to ALL amenities!

Built in 2025

Essential Information

MLS® #	E4422111
Price	\$519,900



Bedrooms 3
 Bathrooms 2.50
 Full Baths 2
 Half Baths 1
 Square Footage 1,462
 Acres 0.00
 Year Built 2025
 Type Single Family
 Sub-Type Half Duplex
 Style 2 Storey
 Status Active

Community Information

Address 8911 Elves Loop
 Area Edmonton
 Subdivision Edgemont (Edmonton)
 City Edmonton
 County ALBERTA
 Province AB
 Postal Code T6M 3G2

Amenities

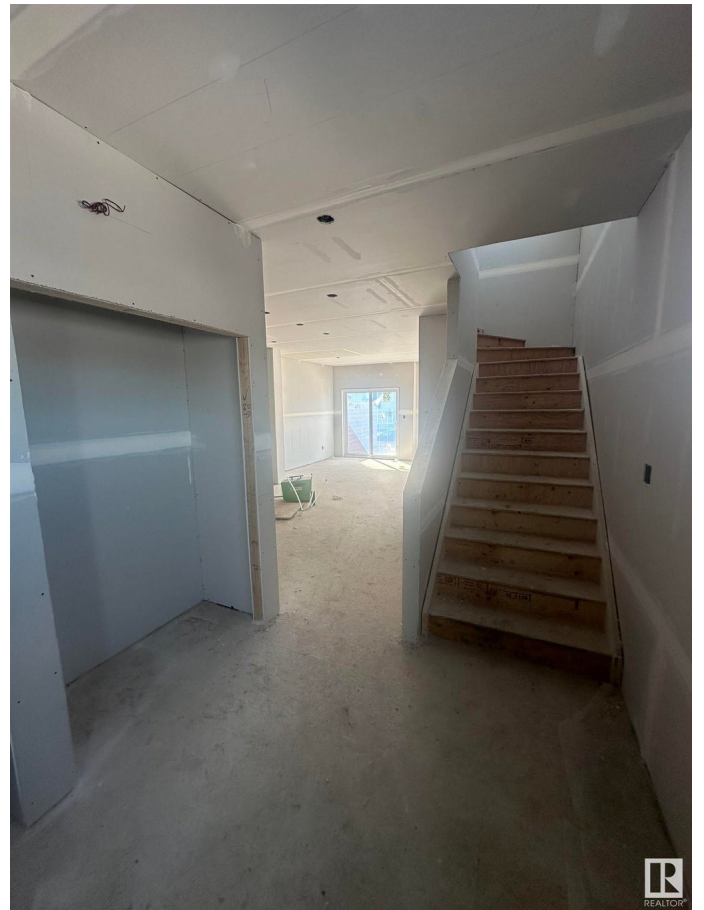
Amenities Ceiling 9 ft., Deck, De
 Insulation-Upgraded, Smart/F
 System, 9 ft. Basement Ceilin
 Parking Double Garage Attached

Interior

Interior Features ensuite bathroom
 Appliances Dishwasher-Built-In, Dryer, C
 Hood Fan, Refrigerator, Stov
 Heating Forced Air-1, Natural Gas
 Stories 2
 Has Basement Yes
 Basement Full, Unfinished

Exterior

Exterior Wood, Stone, Vinyl
 Exterior Features Flat Site, Partially Landscaped, Playground Nearby, Public



	Transportation, Schools
Roof	Asphalt Shingles
Construction	Wood, Stone, Vinyl
Foundation	Concrete Perimeter

Additional Information

Date Listed	February 19th, 2025
Days on Market	62
Zoning	Zone 57

DATA IS DEEMED RELIABLE BUT IS NOT GUARANTEED ACCURATE BY THE REALTORS® ASSOCIATION OF EDMONTON. COPYRIGHT 2025 BY THE REALTORS® ASSOCIATION OF EDMONTON. ALL RIGHTS RESERVED. Trademarks are owned or controlled by the Canadian Real Estate Association (CREA) and identify real estate professionals who are members of CREA (REALTOR®, REALTORS®) and/or the quality of services they provide (MLS®, Multiple Listing Service®)

Listing information last updated on April 22nd, 2025 at 4:47pm MDT